

# GROUND TRANSPORTATION SECURITY REPORT

The theft of freight vehicles in Mexico is currently one of the biggest challenges facing the transportation and logistics industry. For this reason, it is crucial for our organization to inform Customers and suppliers of the most recent data related to ground transportation security in the country, with the aim of ensuring full awareness of current risks.

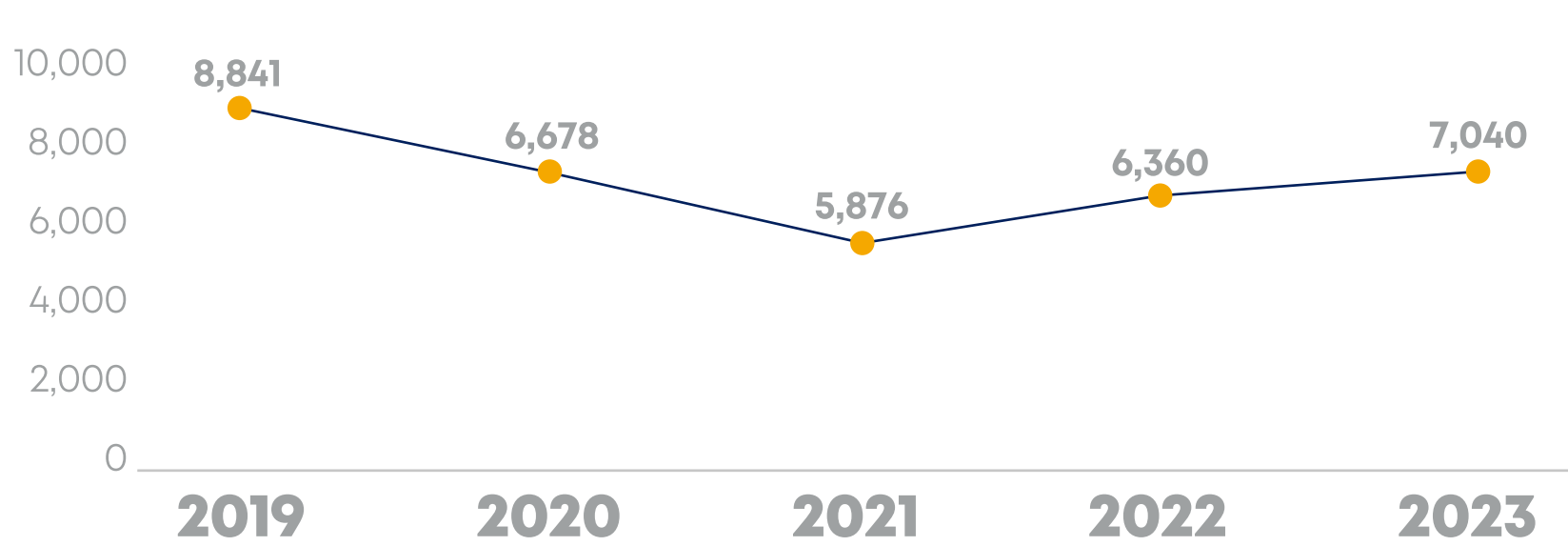
This document contains the **Ground Transportation Security Report for the period January–August 2023**, with an analysis of the current situation and statistics to support decision-making in your daily operations.

## NATIONAL CRIME RATE

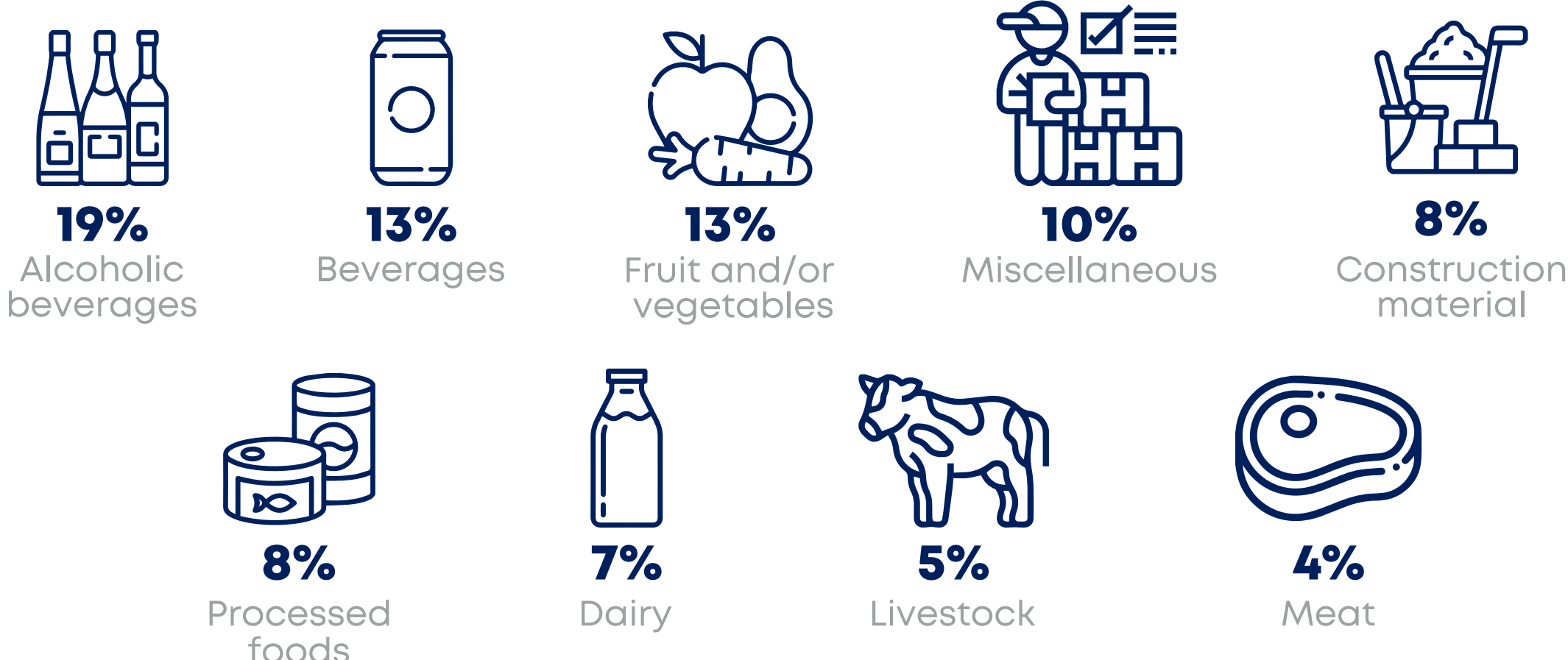
INDICATORS	TOTAL
2019	8,841
2020	6,678
2021	5,876
2022	6,360
2023	7,040

In the period January–August 2023, a total of 7,040 highway thefts of freight vehicles were reported, while in the same period of the previous year the total was 6,360. This represents an increase of 10.7%.

## YEAR-OVER-YEAR COMPARISON



## MOST FREQUENTLY STOLEN PRODUCTS



## ROUTES WITH MOST INCIDENTS

### State of Mexico

- Circuito Exterior Mexiquense
- 85 and 85 D (Mexico City–Pachuca)
- 57 D (Mexico City–Querétaro)
- 150 D (Mexico City–Puebla)
- 134 and 134 D (Toluca–Naucalpan)
- 15 (Mexico City–Toluca)
- 40 D (Arco Norte)

### Puebla

- 150 D (Mexico City–Veracruz)
- Arco Norte
- 117 and 117 D (San Martín Texmelucan–Tlaxcala)
- 190 (Mexico City–Puebla)
- 140 (Xalapa–Puebla)
- 150 (Puebla–Tehuacán)
- 140 D (Amozoc–Perote)
- 119 D (Apizaco–Huahuchinango)
- 144 (El Seco–Azumbilla)

### Michoacán

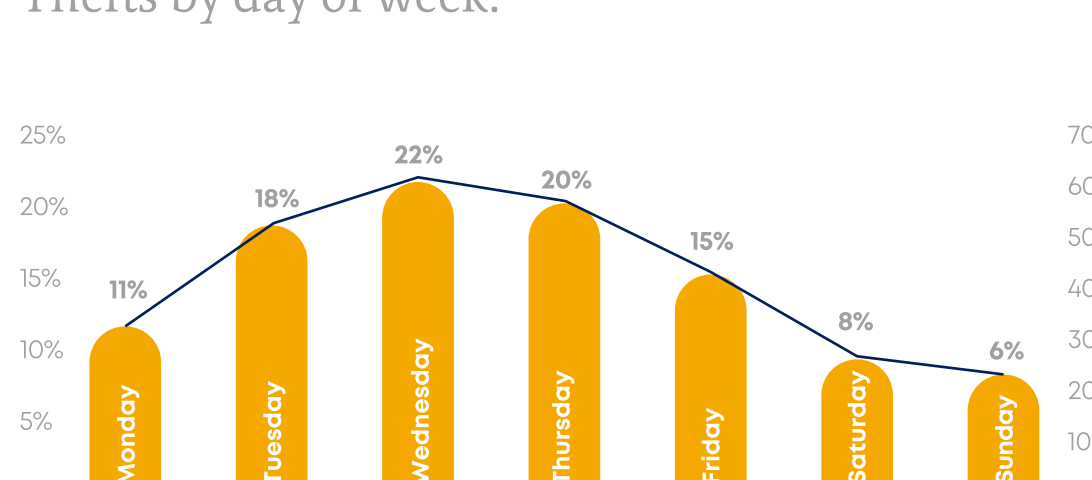
- 14 and 14 D (Morelia–Uruapan)
- 37 and 37 D (Lázaro Cárdenas–Uruapan)
- 43 (Morelia Norte)
- 120 (Apatzingán–Pátzcuaro)

## Other states with largest number of affected highways

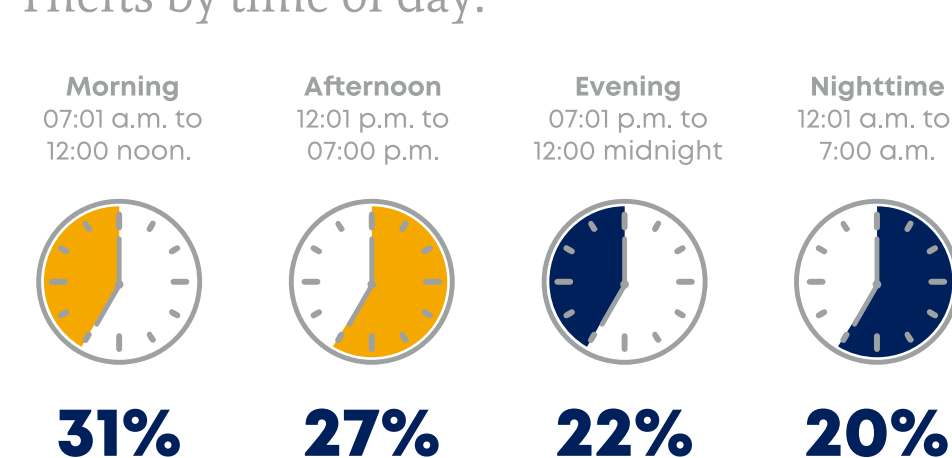
- San Luis Potosí
- Jalisco
- Morelos
- Oaxaca
- Tlaxcala
- Mexico City
- Nuevo León

## ADDITIONAL DATA

### Thefts by day of week:



### Thefts by time of day:



## GOMSA THEFT INCIDENT RATE

In the period January–August 2023, Gomsa operations have experienced a theft incident rate of 0.05%.



## CONCLUSIONS AND SUGGESTIONS

The rise in incidents of thefts on Mexican highways poses a significant challenge for customers, freight and logistics companies, and public authorities. It is therefore essential to take constant, coordinated prevention measures in order to reduce risks and ensure the safety of goods transported on Mexican highways.

### Based on the information presented in this report, we propose the following suggestions:

- Carry out freight transportation logistics activities during daylight hours.
- Constantly review the routes used to transport goods.
- Verify the security providers and equipment you work with.
- Consider purchasing cargo insurance and hiring a security service if necessary.

## SOURCES

Aleph (2023). *Reporte de Inteligencia Agosto 2023*.  
 ANERPV Asociación Nacional de Empresas de Rastreo y Protección Vehicular. (2023). *Informe Mensual de Robos al 30 de Agosto de 2023*.  
 Antaios Data. (2023). *Informe Especial: Atlas Nacional de Riesgos Carreteros México 2023*.  
 Boletín Jurídico, de Seguridad y Normatividad. (n.d.). CANACAR. Retrieved on September 20, 2023, from: <https://canacar.com.mx/servicios/juridico/boletin-juridico-seguridad-normatividad/>.  
 Secretariado Ejecutivo del Sistema Nacional de Seguridad Pública. (n.d.). *Datos Abiertos de Incidencia Delictiva*. gov.mx. Retrieved on September 20, 2023, from <https://www.gob.mx/sesnsp/acciones-y-programas/datos-abiertos-de-incidencia-delictiva>.